

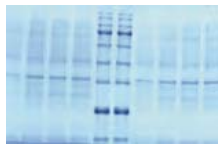
GeISmart

Features

- Compact footprint (216 x 168 x 128 mm) with a viewing area of 10 x10 cm
- Simple operation of experiments and quick acquisition of results
- Blue LED light source for safe imaging with emission of 470nm
- Blue light transilluminator is best for fluorescently stained nucleic acid and protein gels
- Adjustable epi-blue light source emits light with high intensity and minimum heat for better light control
- Quick visualization of fluorescently stained gels/membranes
- Filter holder can accommodate most popular smartphones/tablets
- Optional light-weight mobile App



ECO Safe staining



Coomassie blue
stained SDS-PAGE



colony dish image

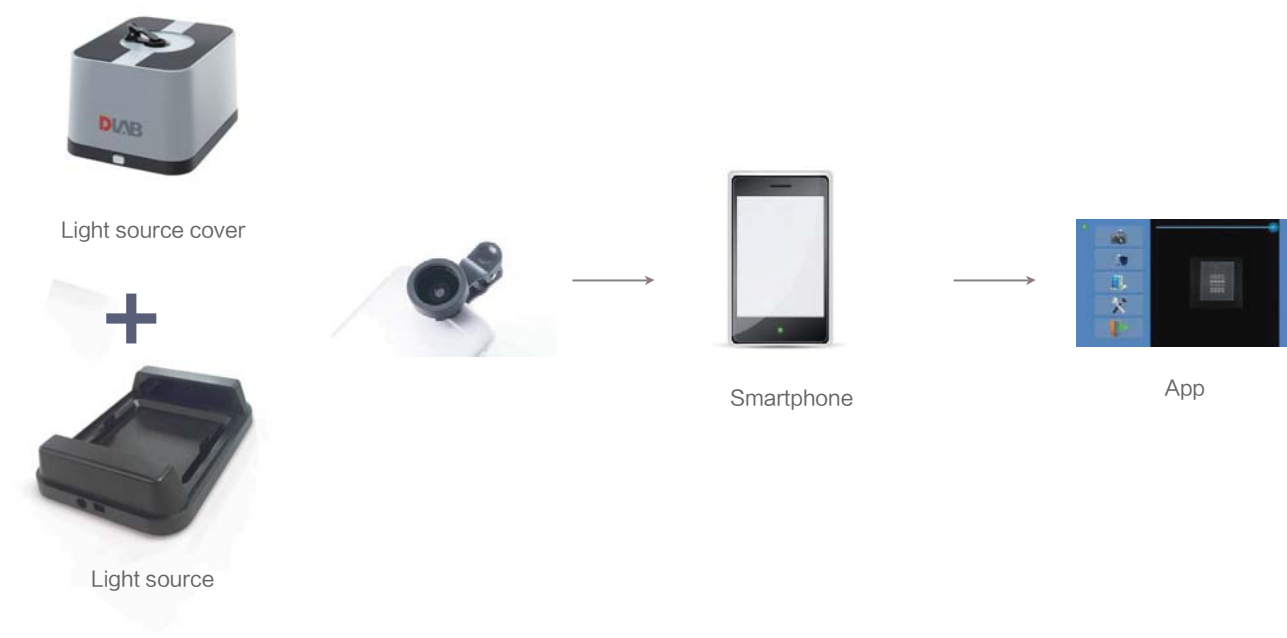
Applications

GeISmart gel imaging system can be used for qualitative analysis of nucleic acid and protein in purification and /or separation application, or colony counting application. With its epi-blue light which is harmless, cost saving and substantially longer real-time life, it effectively excites many fluorescent dyes and stains without compromising the integrity of samples to be used for downstream applications, such as subcloning.

GeISmart provides fast access to acquire high quality images of electrophoresis gel or transfer membrane for analysis using smartphone/ tablet.

In addition, Coomassie blue stained SDS-PAGE and colony dishes can be observed with the light plate mounted on GeISmart. Optionally, can control the complete imaging system via an app on smartphone or tablet.

Applications



Observe and cut gels safe and sound with the amber filter shield



Specifications	GeSMART
Light Source	470nm epi blue light
White Light Plate	Yes
Filter Protective Shield	Amber, using when observing or cutting gels
Viewing Area	10 x 10cm
Compatible Dye	DNA: ECO Safe, SYBR Safe, GelGreen Protein: Lightning Red, Silver/ Coomassie blue,SYPRO Ruby
Light Source (L x W x H)	216 x 168 x 54 mm
Light Source Cover (L x W x H)	211 x 161 x 108 mm
Total Size (L x W x H)	216 x 168 x 128 mm
Weight	1.2 Kg
Power Supply	12V / 1.5A AC power adapter
Optional app	for Android 4.4 and above or iOS9.0 and above