

Vertical Electrophoresis

Vertical electrophoresis utilises potent protein and nucleic acid analytical tools for applications within all aspects of life science research, ranging from purity determination to analysis of complex protein lysates. JUNYI provide a comprehensive range of vertical electrophoresis system, complete with tanks, inserts and reagents to fulfil a variety of applications and techniques in different gel sizes and sample capacities.

JY-series vertical electrophoresis tank comprise 10 models, including: JY-SCZ2+, JY-SCZ4+, JY-Mini-P4, JY-SCZ6+, JY-CZ-B, JY-CZ-BL, JY-JX5, JY-JX5L, JY-SCZ8 and JY-SCZ9.

JY series vertical electrophoresis tank application list

Model Function	JY-SCZ2+	JY-SCZ4+ JY-Mini-P4	JY-JX3 JY-CZ-A	JY-JX3L JY-CZ-AL	JY-JX5 JY-CZ-B	JY-JX5L JY-CZ-BL	JY-SCZ8 JY-SCZ9
Protein samples analysis, purification Nucleic acid	•	•	•	•	•	•	•
sample analysis, purification and preparation			•	•	•	•	•
Seed purity testing					•	•	
Analysis of high- throughput SSR markers					•	•	

Technical specifications for JY-series Vertical Electrophoresis

Model	Gel size (W×L)mm	Total buffer volume (ml)	No. of samples	Gel making mode	Recommended power supply
JY-SCZ2+	82×88	750	11~30	Gel casting	JY300C/JY300E
JY-SCZ4+	82×88	1000	11~60	Gel casting	JY600C/JY600E
JY-Mini-P4	81×73	1200	11~60	Gel casting	JY600C/JY600E
JY-SCZ6+	162×175	4000	21~70	Gel casting	JY600C/JY600E
JY-JX5	186×95	1800	25~104	Agarose sealing	JY300E/JY600E
JY-JX5L	186×205	3500	25~104	Agarose sealing	JY600C/JY600E
JY-CZ-B	186×95	1800	25~104	Gel casting	JY300E/JY600E
JY-CZ-BL	186×205	3500	25~104	Gel casting	JY600C/JY600E
JY-SCZ8	174×175	2200	21~70	Gel casting	JY600C/JY600E
JY-SCZ9	121×150	900	16~52	Gel casting	JY300C/JY300E

JY-SCZ2+ Vertical Electrophoresis Tank



- The installation of glass plates can be completed within 15s, easy and quick.
- With a gel casting stand in original position, no need to move glasses from gel making to electrophoresis running. It is more convenient to observe gel preparing through both sides of the glasses.
- With the background color on the wall of core, it is easy to observe sample loading and electrophoresis running.
- Abundant buffer not only guarantees a cooling environment, but also keeps the pH value stable during the whole experiment.
- Auto-switch-off when the lid is moved.

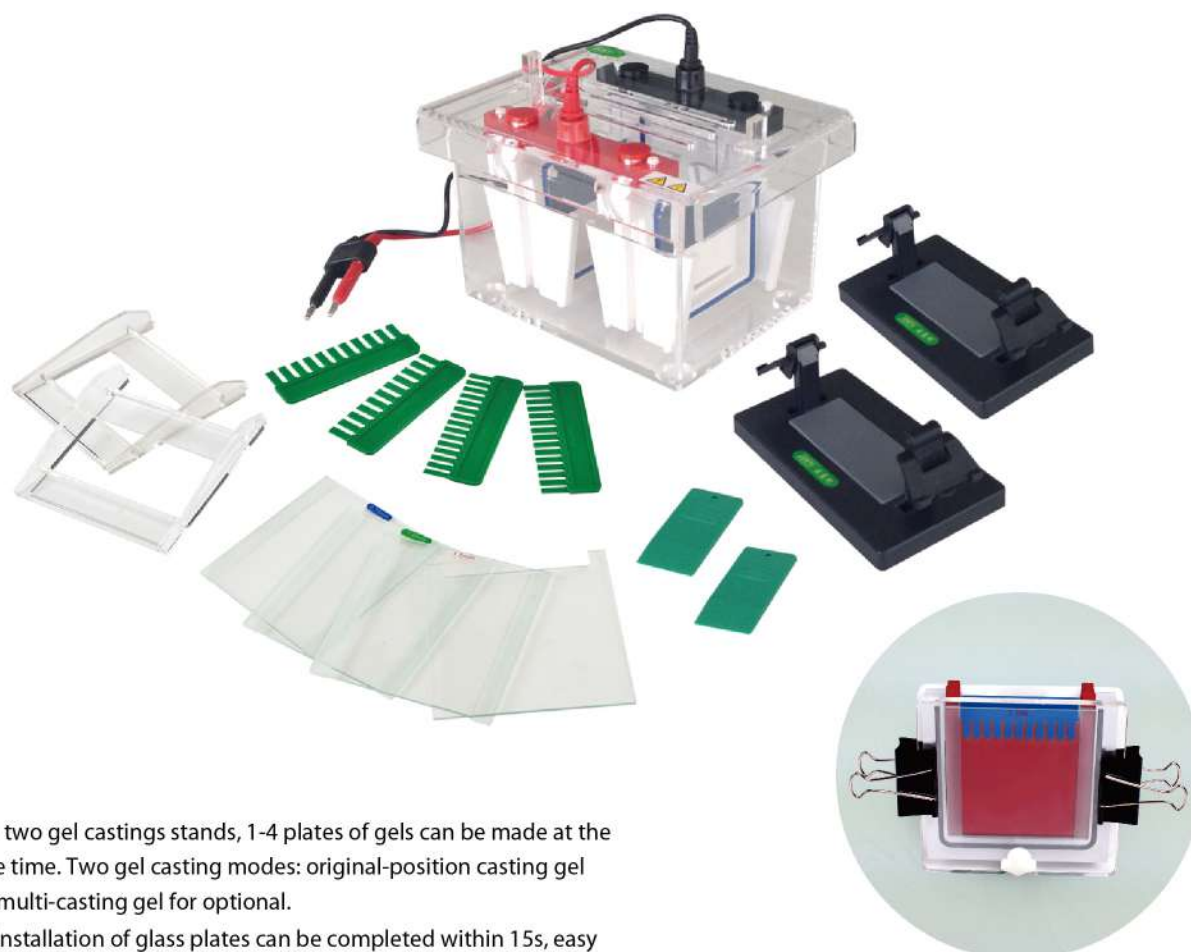
JY-SCZ2+ Technical Specifications

Glass plate size (W×L)	100×100 (mm)
Gel size (W×L)	82×88 (mm)
Gel thickness	0.75, 1.0, 1.5 (mm)
Number of gel	1~2 pc(s)
No. of samples	11~30
Total buffer volume	750 (ml)
Dimension (L×W×H)	150×120×115 (mm)
Weight	1.5 (kg)

JY-SCZ2+ Packing List

Parts name	Quantity
Lid with cables	1
Body tank	1
Gel casting core with electrodes	1
Gel casting stand	1
Notched glass plates	4
Spacer plate with 0.75mm glass spacer	2
Spacer plate with 1.0mm glass spacer	2
Spacer plate with 1.5mm glass spacer	2
0.75mm thickness 11-well comb	2
1.0mm thickness 11-well comb	2
1.5mm thickness 11-well comb	2
0.75mm thickness 15-well comb	2
1.0mm thickness 15-well comb	2
1.5mm thickness 15-well comb	2
Gel releaser	1
Wedge-shaped plates	2
Dummy plate	1

JY-SCZ4+ Vertical Electrophoresis Tank



Multi-Casting Chamber

- With two gel castings stands, 1-4 plates of gels can be made at the same time. Two gel casting modes: original-position casting gel and multi-casting gel for optional.
- The installation of glass plates can be completed within 15s, easy and quick.
- With a gel casting in original position, no need to move glasses from gel making to electrophoresis running. It is more convenient to observe gel preparing through both sides of the glasses.
- With the background color, it is easy to observe sample loading and electrophoresis running.
- Abundant buffer not only guarantees a cooling environment, but also keeps the pH value stable during the whole experiment.
- Auto-switch-off when the lid is moved.

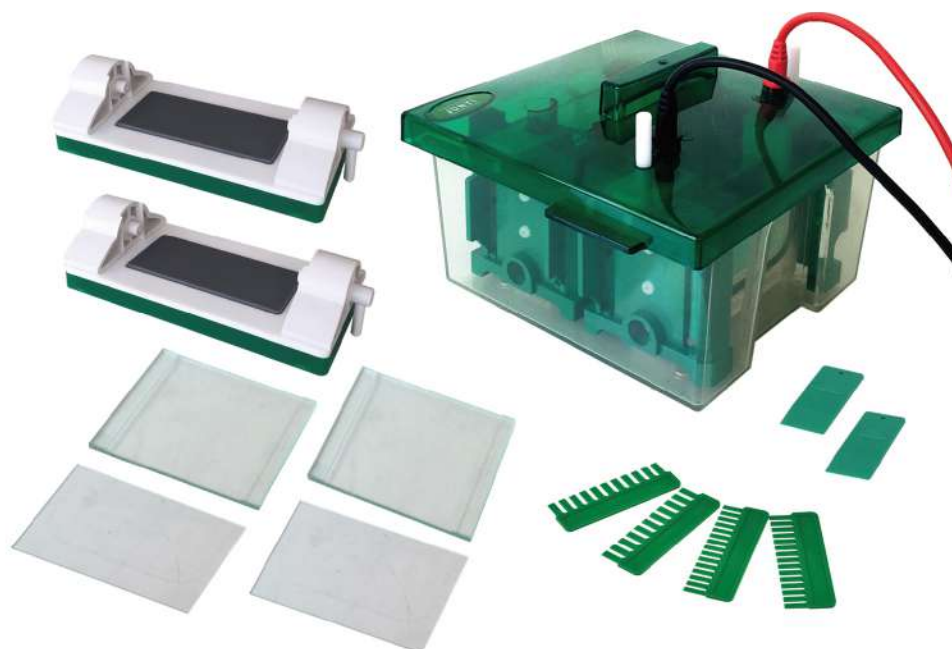
JY-SCZ4+ Technical Specifications

Glass plate size (W×L)	100×100 (mm)
Gel size (W×L)	82×88 (mm)
Gel thickness	1.0, 1.5 (mm)
Number of gel	1~4 pc(s)
No. of samples	11~60
Total buffer volume	1000 (ml)
Dimension (L×W×H)	220×170×120 (mm)
Weight	2.5 (kg)

JY-SCZ4+ Packing List

Parts name	Quantity
Lid with cables	1
Body tank	1
Gel casting core with electrodes	2
Gel casting stand	2
Notched glass plates	6
Spacer plate with 1.0mm glass spacer	4
Spacer plate with 1.5mm glass spacer	4
1.0mm thickness 11-well comb	4
1.5mm thickness 11-well comb	4
1.0mm thickness 15-well comb	4
1.5mm thickness 15-well comb	4
Gel releaser	2
Wedge-shaped plates	4
Dummy plate	3

JY-Mini-P4 Vertical Electrophoresis Tank



- With two gel castings stands, 1-4 plates of gels can be made at the same time.
- The installation of glass plates can be completed within 15s, easy and quick.
- With a gel casting stand in original position, no need to move glasses from gel making to electrophoresis running. It is more convenient to observe gel preparing through both sides of the glasses.
- With the background color, it is easy to observe sample loading and electrophoresis running.
- Abundant buffer not only guarantees a cooling environment, but also keeps the pH value stable during the whole experiment.
- With protective strip of positive electrode, it can prevent producing bubbles and also protect platinum silk from damage.
- Auto-switch-off when the lid is moved.



JY-Mini-P4 Technical Specifications

Glass plate size (W×L)	101×82 (mm)
Gel size (W×L)	101×73 (mm)
Gel thickness	1.0 (mm)
Number of gel	1~4 pc(s)
No. of samples	11~60
Total buffer volume	1200 (ml)
Dimension (L×W×H)	175×175×100 (mm)
Weight	2.5 (kg)

JY-Mini-P4 Packing List

Parts name	Quantity
Lid with cables	1
Body tank	1
Gel casting core with electrodes	2
Gel casting stand	2
Short glass plates	6
Spacer plate with 1.0mm glass spacer	6
1.0mm thickness 11-well comb	6
1.0mm thickness 15-well comb	6
Gel releaser	2

JY-SCZ6+ Vertical Electrophoresis Tank



- With a gel casting stand in original position, no need to move glasses from gel making to electrophoresis running. It is more convenient to observe gel preparing through both sides of the glasses.
- Abundant buffer not only guarantees a cooling environment, but also keeps the pH value stable during the whole experiment.
- Auto-switch-off when the lid is moved.



JY-SCZ6+ Technical Specifications

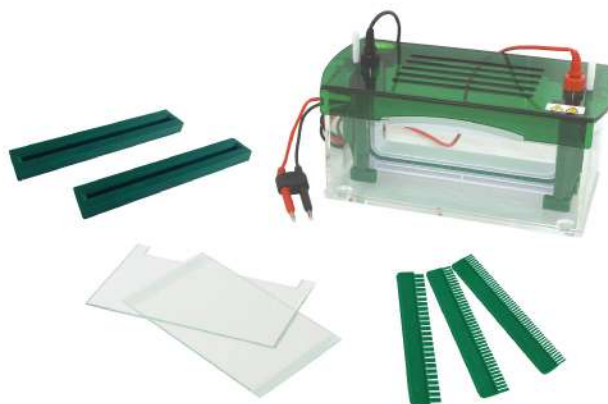
Glass plate size (W×L)	200×200 (mm)
Gel size (W×L)	162×175 (mm)
Gel thickness	1.0 (mm)
Number of gel	1~2 pc(s)
No. of samples	21~70
Total buffer volume	4000 (ml)
Dimension (L×W×H)	295×170×279 (mm)
Weight	7.1 (kg)

JY-SCZ6+ Packing List

Parts name	Quantity
Lid with cables	1
Body tank	1
Gel casting core with electrodes	1
Gel casting stand	1
Notched glass plates	3
Spacer plate with 1.0mm glass spacer	3
1.0mm thickness 21-well comb	3
1.0mm thickness 35-well comb	3
Dummy plate	1

JY-JX series Vertical Electrophoresis Tank

- The installation of glass plates can be completed within 15s, easy and quick.
- With the gel casting modular, multi plates can be made.
- It's more convenient to open the lid with the easy-open buttons.
- Abundant buffer not only guarantees cooling effects, but also keeps the pH Value stable during the whole experiment process.
- Auto-switch-off when the lid is moved.



JY-JX5 Technical Specifications

Glass plate size (W×L)	216×110 (mm)
Gel size (W×L)	186×95 (mm)
Gel thickness	1.0 (mm)
Number of gel	1~2 pc(s)
No. of samples	25~104
Total buffer volume	1800 (ml)
Dimension (L×W×H)	290×170×155 (mm)
Weight	3.2 (kg)

JY-JX5L Technical Specifications

Glass plate size (W×L)	216×220 (mm)
Gel size (W×L)	186×205 (mm)
Gel thickness	1.0 (mm)
Number of gel	1~2 pc(s)
No. of samples	25~104
Total buffer volume	3500 (ml)
Dimension (L×W×H)	290×170×250 (mm)
Weight	5.6 (kg)

JY-JX series Packing List

Parts name	Quantity
Lid with cables	1
Body tank	1
Gel casting core with electrodes	1
Gel casting modular	2
Notched glass plates	4
Spacer plate with 1.0mm glass spacer	4
1.0mm thickness 25-well comb	2
1.0mm thickness 40-well comb	2
1.0mm thickness 52-well comb	2
Dropper	1

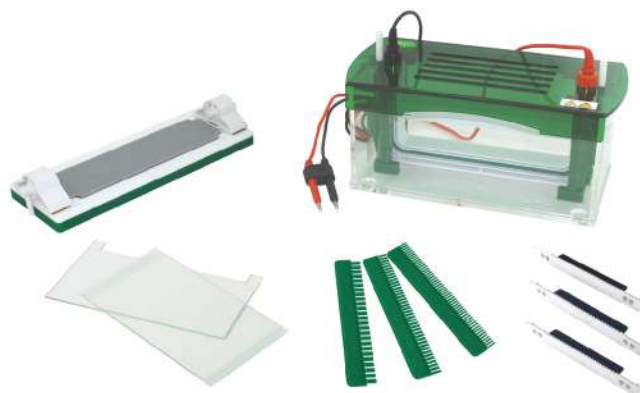


Use the gel making modular to make the multi slab gel at the same time.

* We can provide 4 or 6 plates system for you to meet the requirement of high throughput electrophoresis.

JY-CZ series Vertical Electrophoresis Tank

- The installation of glass plates can be completed within 15s, easy and quick.
- With a gel casting stand in original position, no need to move glasses from gel making to electrophoresis running. It is more convenient to observe gel preparing through both sides of the glasses.
- With a precast gel inner core, it can make the gel casting and electrophoresis running at the same time.
- It's more convenient to open the lid with the easy-open buttons.
- Abundant buffer not only guarantees cooling effects, but also keeps the pH value stable during the whole experiment.
- Auto-switch-off when the lid is moved.



JY-CZ-B Technical Specifications

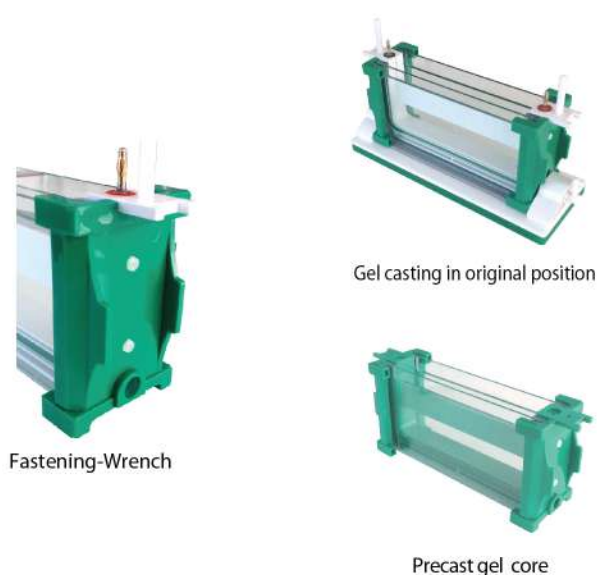
Glass plate size (W×L)	216×110 (mm)
Gel size (W×L)	186×95 (mm)
Gel thickness	1.0 (mm)
Number of gel	1~2 pc(s)
No. of samples	25~104
Total buffer volume	1800 (ml)
Dimension (L×W×H)	290×170×155 (mm)
Weight	4.1 (kg)

JY-CZ-BL Technical Specifications

Glass plate size (W×L)	216×220 (mm)
Gel size (W×L)	186×205 (mm)
Gel thickness	1.0 (mm)
Number of gel	1~2 pc(s)
No. of samples	25~104
Total buffer volume	3500 (ml)
Dimension (L×W×H)	290×170×250 (mm)
Weight	6.2 (kg)

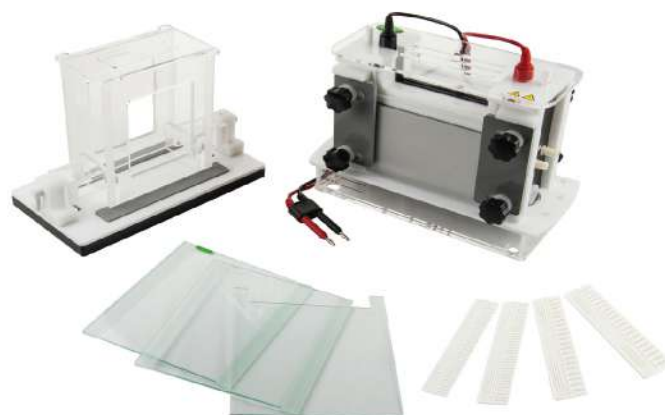
JY-CZ series Packing List

Parts name	Quantity
Lid with cables	1
Body tank	1
Gel casting core with electrodes	1
Gel casting stand	1
Precast gel core	1
Notched glass plates	4
Spacer plate with 1.0mm glass spacer	4
1.0mm thickness 25-well comb	2
1.0mm thickness 40-well comb	2
1.0mm thickness 52-well comb	2



JY-SCZ8, JY-SCZ9 Vertical Electrophoresis Tank

- With aluminum-plate device, the temperature of the glass plates can be controlled effectively.
- Can be connected with a constant temperature circulation device.
- Can save 50% buffer compare with traditional tanks.
- Removable electrodes enable maintenance and replacement easy and quick.
- Auto-switch-off when the lid is moved.



Technical specifications for JY-SCZ8, SCZ9 Vertical Electrophoresis Tank

	JY-SCZ8	JY-SCZ9
Glass plate size (W×L)	214×220 (mm)	151×170 (mm)
Gel size (W×L)	174×195 (mm)	121×150 (mm)
Gel thickness	1.0, 1.5 (mm)	1.0, 1.5 (mm)
Number of gel	1~2 pc(s)	1~2 pc(s)
No. of samples	21~70	16~52
Total buffer volume	2200 (ml)	900 (ml)
Dimension (L×W×H)	320×140×260 (mm)	296×130×200 (mm)
Weight	13.5 (kg)	6.6 (kg)

JY-SCZ8 Packing List

Parts name	Quantity
Lid with cables	1
Main body with electrodes	1
Bottom tank	1
Gel casting stand	1
Notched glass plates	3
Spacer plate with 1.0mm glass spacer	3
Spacer plate with 1.5mm glass spacer	3
1.0mm thickness 21-well comb	2
1.5mm thickness 21-well comb	2
1.0mm thickness 35-well comb	2
1.5mm thickness 35-well comb	2
Dummy plate	1

JY-SCZ9 Packing List

Parts name	Quantity
Lid with cables	1
Main body with electrodes	1
Bottom tank	1
Gel casting stand	1
Notched glass plates	4
Spacer plate with 1.0mm glass spacer	2
Spacer plate with 1.5mm glass spacer	2
1.0mm thickness 16-well comb	2
1.5mm thickness 16-well comb	2
1.0mm thickness 26-well comb	2
1.5mm thickness 26-well comb	2
Dummy plate	1

Nucleic Acid Sequencing System

The JY-series Nucleic Acid sequencing system are designed for AFLP analysis, different display, SSR and SSCP research. They are suitable for heteroduplex, DNA foot printing, RNase protection test, S1 Nucleic acid enzyme figures and Primer Extension experiments.

JY-series Nucleic Acid sequencing products comprises 3 models, including: JY-CX1B, JY-CX2B, and JY-CX3B.



• Removable electrodes

- Simple operation, only four fastening knobs needed.
- Can save 50% buffer compare with traditional tanks.
- Removable electrodes make maintenance and replacement easy and quick.
- With aluminum-plate device, the temperature of the glass plates can be controlled effectively.
- Auto-switch-off when the lid is moved.



• High quality 0.4mm thickness shark tooth sample adding comb

Technical specifications for JY-CX series Nucleic Acid sequencing

	JY-CX1B	JY-CX2B	JY-CX3B
Glass plate size (W×L)	200×450 (mm)	350×450 (mm)	350×350 (mm)
Gel size (W×L)	180×420 (mm)	330×420 (mm)	330×320 (mm)
Gel thickness	0.4 (mm)	0.4 (mm)	0.4 (mm)
Number of gel	1 pc	1 pc	1 pc
No. of samples	32, 39	50, 62, 74, 100	50, 62, 74, 100
Total buffer volume	500 (ml)	750 (ml)	750 (ml)
Dimension (L×W×H)	310×230×500 (mm)	455×230×500 (mm)	460×230×400 (mm)
Weight	11.0 (kg)	16.5 (kg)	13.2 (kg)

Trans-Blotting

Transfer-blotting technique entails immobilisation of proteins or nucleic acids on a solid membrane support and then detection using a specific antibody or probe of complementary nucleic acid sequence, significantly increase the potential for identification and characterisation of proteins and nucleic acids. Upon transfer to a membrane support protein and nucleic acids become far more accessible to detection by antibodies and probes than they would otherwise be within a gel.

JY-series Trans-Blotting products comprises 6 models, including: JY-ZY2, JY-ZY3, JY-ZY4, JY-ZY5, JY-ZY6 and JY-ZY7.

JY-ZY2 Tank Transfer

- It can make the process of transfer blotting more efficient with a cooling device.
- Auto-switch-off when the lid is moved.

JY-ZY2 Packing List

Parts name	Quantity
Body tank with electrode	1
Transfer splint	2
Fibre pads	4
Cooling pack	1
Cooling pipe	2
Electrical Cables	1



JY-ZY2 Technical Specifications

Trans size (W×L)	175×175 (mm)
Total buffer volume	4000 (ml)
Dimension (L×W×H)	205×170×240 (mm)
Weight	2.3 (kg)

JY-ZY series Semi-dry Transfer

- Quick transferring, it can be completed within 1 hour.
- Less heat, no need for extra cooling device.
- Less buffer is needed than the tank transfer.
- Auto-switch-off when the lid is moved.

JY-ZY3 Technical specifications

Trans size (W×L)	140×140 (mm)
Dimension (L×W×H)	185×175×40 (mm)
Weight	1.4 (kg)



JY-ZY4 Technical Specifications

Trans size (W×L)	240×160 (mm)
Dimension (L×W×H)	285×195×40 (mm)
Weight	3.0 (kg)

JY-ZY5 Tank Transfer

- Short distance between two electrodes, greatly save transferring time.
- With color mark on the splint, it can ensure to put the gel right into the inner core.
- Removable electrodes enable maintance and replacement easy and quick.
- The transparent lid effectively prevent liquid volatilizing and electricity leaking.
- Auto-switch-off when the lid is moved.
- Available either as a complete stand-alone apparatus or as a module compatible with the buffer tank and lid of the JY-SCZ2+.



JY-ZY5 Packing List

Parts name	Packing quantity
Lid with cables	1
Body tank	1
Core with electrodes	1
Transfer splint	2
Fibre pads	4

JY-ZY5 Technical Specifications

Trans size (W×L)	100×100 (mm)
Total buffer volume	750 (ml)
Dimension (L×W×H)	150×120×115 (mm)
Weight	0.8 (kg)

JY-ZY6 Tank Transfer Module

- JY-ZY6 Tank transfer module can be used as a module to buffer tank of JY-SCZ2+.



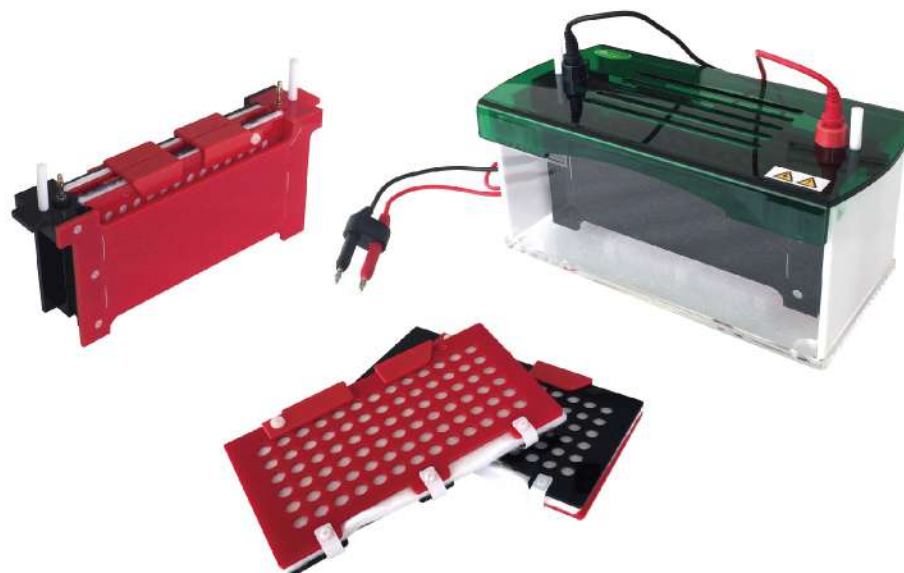
JY-ZY6 Packing List

Parts name	Quantity
Core with electrodes	1
Transfer splint	2
Fibre pads	4

JY-ZY6 Technical Specifications

Trans size (W×L)	100×100 (mm)
Dimension (L×W×H)	139×55×105 (mm)
Weight	0.4 (kg)

JY-ZY7 Tank Transfer



- Short distance between two electrodes, greatly save transferring time.
- With color mark on the splint, can ensure to put the gel right into the inner core.
- Removable electrodes enable maintenance and replacement easy and quick.
- The transparent lid effectively prevent liquid volatilizing and electricity leaking.
- Auto-switch-off when the lid is moved.
- Available either as a complete stand-alone apparatus or as a module compatible with the buffer tank and lid of the JY-JX5 and JY-CZ-B.

JY-ZY7 Technical Specifications

Trans size (W×L)	216×110 (mm)
Total buffer volume	1800 (ml)
Dimension (L×W×H)	297×170×155 (mm)
Weight	1.7 (kg)

JY-ZY7 Packing List

Parts name	Packing quantity
Lid with cables	1
Body tank	1
Core with electrodes	1
Transfer splint	2
Fibre pads	4

2D Gel Electrophoresis

Two dimensional electrophoresis is a combination of isoelectric focusing electrophoresis and SDS-PAGE, namely the first isoelectric focusing electrophoresis (according to pI separation), then SDS-PAGE (according to molecular size), after electrophoresis graph coloring obtained is a two-dimensional distribution of protein diagram.

JY-SX3 2D Gel Electrophoresis



- No need for high current electrophoresis power supply.
- The 1st D and 2nd D is separated, either is an independent electrophoresis tank.
- Can keep a cooling environment with cooling water.
- It is more convenient to open the lid with the easy button.
- Auto-switch-off when the lid is moved.

JY-SX3 Technical Specifications

1st D Tube Gel Electrophoresis:	
length of Glass tube	120 (mm)
Gel diameter	1.0, 2.0 (mm)
2nd D Vertical Electrophoresis	
Gel size (W×L)	143×139 (mm)
Gel thickness	1.0, 2.0 (mm)
Number of gels	2 (ps)
No. of samples	17~58
Total buffer volume	2500 (ml)
Dimension (L×W×H)	460×230×400 (mm)
Weight	13.2 (kg)

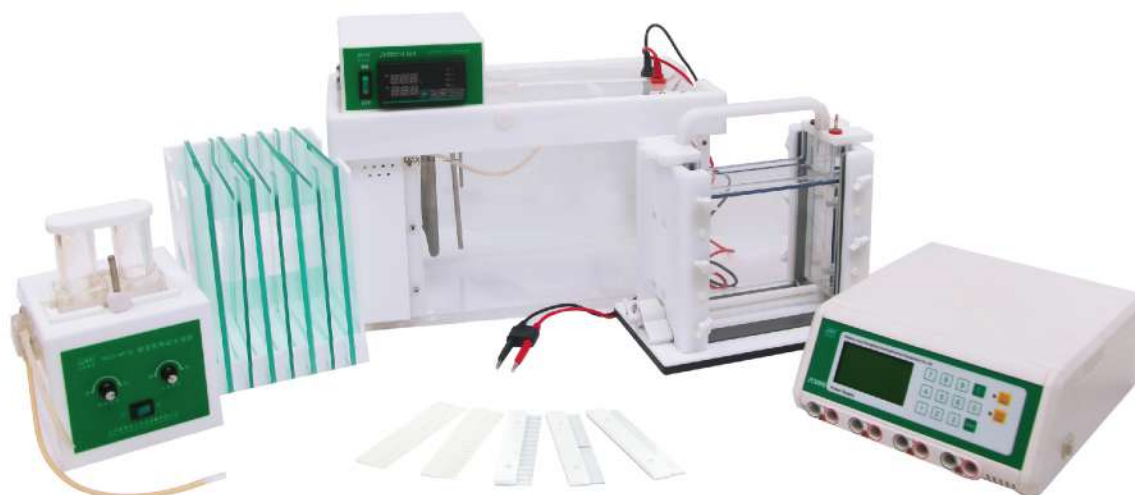
JY-SX3 Packing List

Parts name	Quantity
Lid with cables	1
Body Tank	1
1st D core with electrodes	1
2nd D core with electrodes	1
Notched glass plates	4
Spacer plates with 1.0mm glass spacer	2
Spacer plates with 1.0mm glass spacer	2
1.0mm thickness 21-well comb	2
2.0mm thickness 21-well comb	2
1.0mm thickness 29-well comb	2
2.0mm thickness 29-well comb	2
1.0mm diameter glass tube	12
2.0mm diameter glass tube	12
Rubber plug	24
Gel casting stand	1
Silica gel tube	3

Denaturing Gradient Gel Electrophoresis System

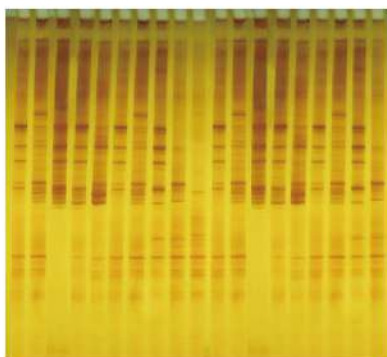
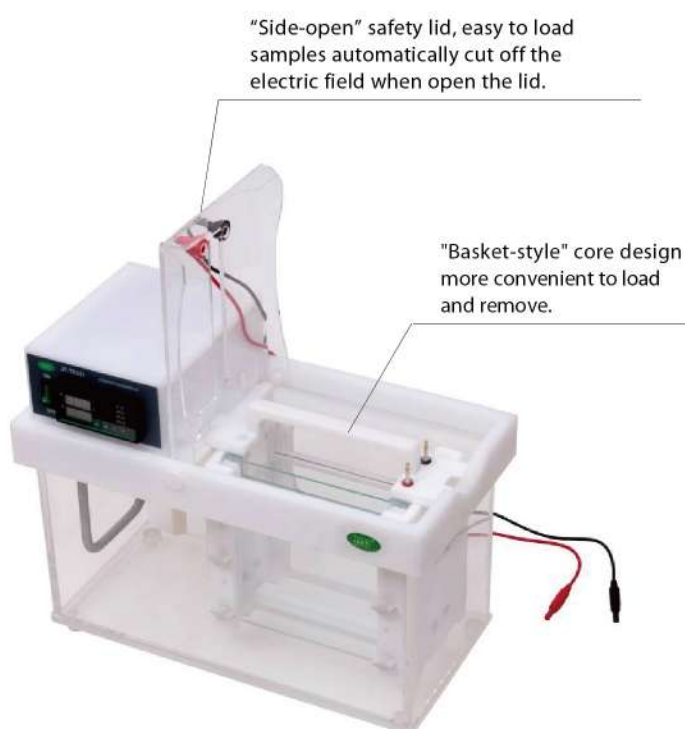
Denaturing Gradient Gel Electrophoresis (DGGE) is an important technique used in research for mutations and DNA polymorphisms critical in genetic disorders and cancers, and to understand genetic diversity among species.

JY-TD331A Denaturing Gradient Gel Electrophoresis System



Product features

- With a gel casting in original position, no need to move glasses from gel making to electrophoresis running. It is more convenient to observe gel preparing through both sides of the glasses.
- With a Gradient gel electric generator, the flow rate can be adjusted.
- Built-in miniature buffer liquid circulating pump, a buffer solution temperature uniformity can be achieved $\pm 5^{\circ}\text{C}$.
- Side-open safety lid, easy to load samples, automatically cut off the electric field when open lid.
- Type of Output: Constant voltage, constant current or constant power.
- Max output: 600V, 500mA, 300W.
- With over-voltage, overload auto-detection and alarm function.
- Can simultaneously display all parameter set and output status.
- Insulating fire-retardant materials, injection molding shell.
- Can store 10 common electrophoresis ways.
- Timing range: 1min~99hr, 59min
- With a safety sheath to the temperature control probe, it can protect it from damaging.
- With a buffer height sensor, it can protect the unit from damaging by lack of buffer.



Electropherogram



Glass plates and temperature controller stand

JY-TD331A Technical Specifications

Glass plate size (W×L)	200×200 (mm)
Gel size (W×L)	162×175 (mm)
Gel thickness	1.0 (mm)
Number of gel	1~2 pc(s)
No. of samples	1~70
Total buffer volume	10 (L)
Dimension (L×W×H)	458×230×285 (mm)
Weight	23.0 (kg)

JY-TD331A Packing List

Parts name	Quantity
Power supply	1
Body tank with electrodes	1
Gel casting stand	1
Gradient gel electric generator	1
Notched glass plates	4
Spacer plate with 1.0mm glass spacer	4
1.0mm thickness 1-well comb	2
1.0mm thickness 2-well comb	2
1.0mm thickness 15-well comb	2
1.0mm thickness 21-well comb	2
1.0mm thickness 35-well comb	2
Accessory kit	1
Control cables	1
Electrical cables	1

Pulsed Field Gel Electrophoresis System

Pulsed field gel electrophoresis system is mainly used for the separation and analysis of genome DNA, DNA molecular detection and separation of 100bp-6Mb size, the separation is mainly applied to chromosome DNA, field construction, large fragment genomic library and identification of transgenic research analysis.

JY600MCS-3 Pulsed Field Gel Electrophoresis System

Patent No.: 201320519441.3



Product formation

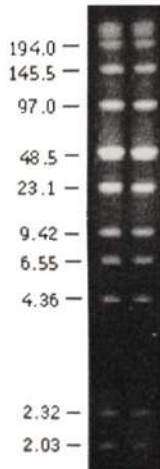
- Power supply module:**
 Molding shell, touch keys, dual core microprocessor intelligent control, editable program, open cover power-off, overload and no-load protection, automatic connection, automatic memory and shutdown functions.
- Output mode control allocation module:**
 Under the control of CPU intelligent unit, the power supply can provide outputs to electric-field according to program mode. The controlled voltage,current,electric field angle and duration are outputted to a specific sub-electrode pair of the electrophoresis tank to form a experimental pulse electric filed.
- Elelectrophoresis tank module:**
 The tank is composed of hexagonal pulse electrophoresis electrodes. There are three independent sub-electrodes to each side, which can distributes the pulse field driving power to specific sub-electrode pairs.It can enable the pulse field strenth, electric angle and conversion time to meet meet the needs of pulse field electrophoresis experiment. Meanwhile, it also can control the buffer cooling unit to keep the electrophoresis running in constant temperature and ensure the experiment result.
- Constant temperature circulator module:**
 Built -in buffer cooling circulation pump, it can effectively control the electrophoresis temperature, keep the unit high-efficient use and long-life service.

Features

- Isolated fragment: 100bp-6Mb.
- Voltage gradient: Max. 9.5V/cm, increment 0.1v/cm.
- Max. current: 0.5A.
- Max. power: 300W.
- Pulse angle: $\pm 120^\circ$, $\pm 180^\circ$, field reversal function.
- Pulse width: 1~9999s programmed pulse or 1~20s line-increase pulse.
- Module timer: 1min~99hours 59min.
- Temperature range: 10°C~30°C, Tolerance: $< \pm 0.5^\circ\text{C}$
- Temperature detection: Detect the temperature of buffer solution directly. Tolerance: $< \pm 0.1^\circ\text{C}$.
- Cycling module: Built-in buffer cycling system.
- Control function: Dual core microprocessor intelligent control:
 - Editable program and automatic connection function;
 - Open cover power-off protection;
 - Overload and no-load protection;
 - Automatic memory function;
 - Automatic shutdown function.

The imageshows:
low range PFG Marker
Pulsed field gel electrophoresis results.

The conditions of electrophoresis:
1% agarose gel,
electrophoresis buffer Milli-QTM water
preparation of 0.5XTBE (50mM Tris-HCL,
50mM 1mM, boric acid, EDTA)
With 4.5V/cm voltage,
Pulse time from one second to 12 seconds,
Temperature 15°C, electrophoresis of 15 hours.



JY600MCS-3 Technical Specifications

Gel size (W×L)	120×120 (mm)
No. of samples	9~13
Total buffer volume	3000 (ml)
Dimension (L×W×H)	Power supply: 280×240×110 (mm)
	Pulsed tank: 465×445×142 (mm)
	Output control allocation: 465×445×100 (mm)
	Constant temperature circulator: 350×200×480 (mm)
Weight	85.2 (kg)

JY600MCS-3 Packing List

Parts name	Quantity
Power supply	1
Output control allocation	1
Pulsed Electrophoresis tank	1
Constant temperature circulator	1
Gel casting	1
120×120mm Gel tray	1
Gel pad	1
2.0mm thickness 9-well comb	2
2.0mm thickness 13-well comb	2
Sample module	2
Sample exporter	2
Level	1
Clip	2
Circular tube	3
level adjusting button	4
Control line	2
Electrical Cables	1
Power cord	1

JY-Pulse System Pulsed Field Gel Electrophoresis System

Pulsed field electrophoresis is performed by alternately changing the electric field between pairs of different spatial azimuth electrodes, changing the directions of DNA molecules of the millions of bases and passing the agarose gel pores at different migration rates to separate the DNA.

Pulsed field electrophoresis system is mainly used for the separation and analysis of genomic DNA, which can detect and isolate 100bp-6Mb size DNA molecules, mainly used in the separation of chromosomal DNA; large fragment genome library construction, identification and analysis; transgenic research; pathogenic microorganisms Identification, traceability; DNA radiation damage and repair; cell apoptosis and other fields.

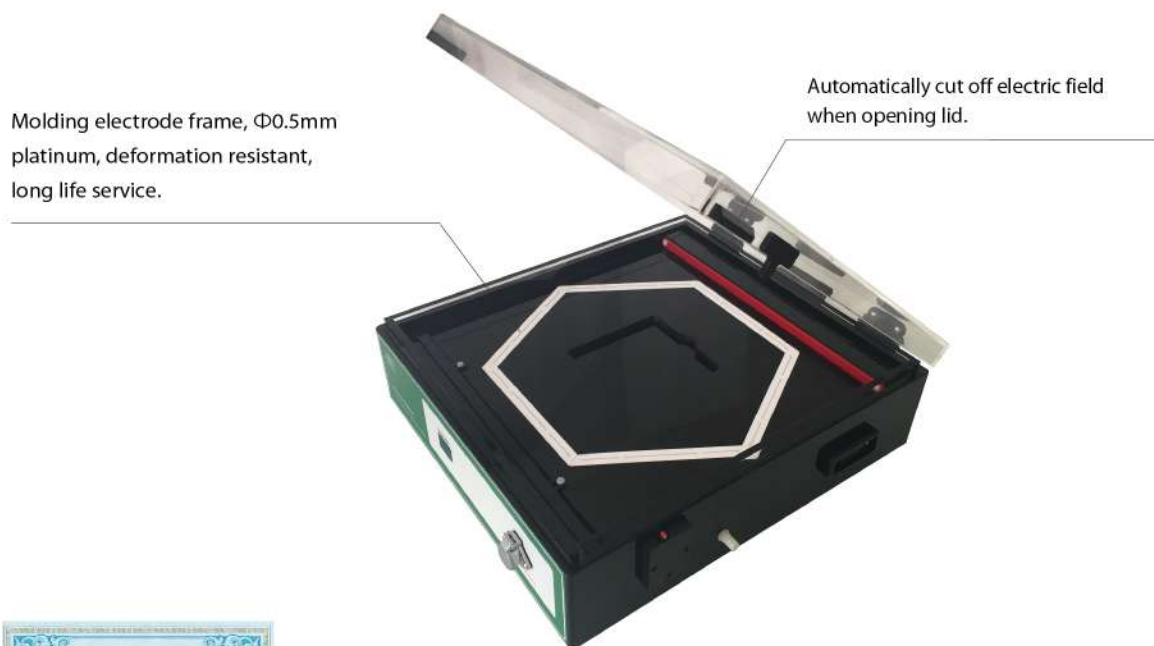
The JY-Pulse System model pulsed-field electrophoresis system is the latest upgrade product on base of JY-600MCS-3, which has been well-known for its original reputation. The performance of the JY-Pulse System is as follows:

Patent No.: 201320519441.3



Product features

- Voltage gradient: $\pm 1.0V / cm \sim \pm 9.5V / cm$
- Fixed pulse width range: 1~99999s
- Incremental pulse width range: 0.01~99.99s
- A variety of incremental modes, suitable for exploring different DNA fragments of the experimental results.
- Multi-function clock with leap year and daylight saving time correction.
- Digital key and shortcut key setting function.
- Setting correction and program correction function.
- Pause / Recovery run function.
- Recording power off time and intelligent recovery function.
- Recording experimental datas function.
- Molding electrode frame, with $\Phi 0.5mm$ platinum electrode, deformation resistant, long life service, to ensure stable experimental efficiency.
- Temperature detection: directly detect the temperature of buffer. Tolerance: $< \pm 0.1 ^\circ C$.
- Classic program database and free database-upgraded service for free.



The honor of the product:

Patent number: ZL 2013 2 0519441.3

Software copyright: 0174722

Independent innovation award

JY-Pulse System Technical Specifications

Gel size (W×L)	120×120 (mm)
No. of samples	9~13
Total buffer volume	2100 (ml)
Dimension (L×W×H)	Power supply: 400×400×170 (mm) Pulsed Electrophoresis tank: 395×440×140 (mm) Constant temperature circulator: 350×200×480 (mm)
Weight	70.0 (kg)

JY-Pulse System Packing List

Parts name	Quantity
Power supply	1
Pulsed Electrophoresis tank	1
Constant temperature circulator	1
Gel casting	1
120×120mm Gel tray	1
Gel pad	1
2.0mm thickness 9-well comb	2
2.0mm thickness 13-well comb	2
Sample module	2
Sample exporter	2
Level	1
Clip	2
Circular tube	3
level adjusting button	4
Control line	2
Electrical cables	1
Power cable	1