

Spectrophotometer

**SP-V1000/SP-UV1000/SP-V1100/
SP-UV1100**

Features

- Saves up to 200 group data & 200 standard curves
- Data can be restored even after a sudden power failure
- Auto setting of wavelength to calibrate the system
- Wavelength range from 190 to 1100nm
- Automatic Switching between Tungsten & Deuterium lamps
- System is fully equipped and capable of executing all functions in stand-alone mode
- Large sample for accommodate 5 – 100mm path length cuvettes with optional holders
- Optional application software 'Wave Professional' provides computer control , and other functions such as spectrum scan, time scan(kinetics), multiwavelength scanning & Nucleic Acid / Protein measurement. (SP-V1100/SP-UV1100)
- Wide range of accessories are available



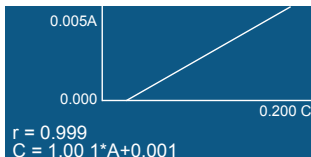
Applications

Our Spectrophotometer range is highly recommended for live display of ABS & %T, Quantitative analysis (Beer's Law), Reaction monitoring, Colorimetric analysis, Kinetic experiments, Protein and DNA assays, DNA & RNA quantification, Protein quantification and many more application in Advanced teaching labs; Industrial, Pharmaceutical, Life Science & Biotechnology research QA/QC labs.

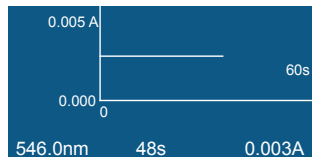
Basic Mode

| 546.0nm | | 0.001A |
|---------|-------|--------|
| No. | WL. | Abs. |
| 1 | 230.0 | 0.001 |
| 2 | 340.0 | 0.000 |
| 3 | 450.0 | 0.002 |
| 4 | 540.0 | 0.000 |
| 5 | 620.0 | 0.003 |

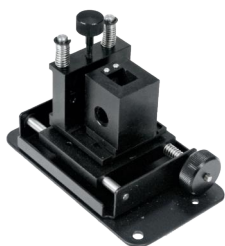
Quantitative



Kinetics



| Model | SP-V1000 | SP-UV1000 | SP-V1100 | SP-UV1100 |
|---------------------------|---|---|---|---|
| Optical System | Single Beam | Single Beam | Single Beam | Single Beam |
| Light Source | Tungsten lamp | Tungsten lamp & Deuterium lamp | Tungsten lamp | Tungsten lamp & Deuterium lamp |
| Spectral Bandwidth | 4.0nm | 4.0nm | 2.0nm | 2.0nm |
| Wavelength Range | 325–1000nm | 200–1000nm | 320–1100nm | 190–1100nm |
| Wavelength Accuracy | ± 2nm | ± 2nm | ± 0.5nm | ± 0.5nm |
| Wavelength Repeatability | ≤1nm | ≤1nm | ≤0.3nm | ≤0.3nm |
| Photometric Range | –0.3 – 3.0 A, 0 – 200%T | –0.3 – 3.0 A, 0 – 200%T | –0.3 – 3.0 A, 0 – 200%T | –0.3 – 3.0 A, 0 – 200%T |
| Photometric Accuracy | ± 0.003 A @ 0.5 A, ± 0.006 A @ 1.0 A, ± 0.5%T @ 100%T | ± 0.003 A @ 0.5 A, ± 0.006 A @ 1.0 A, ± 0.5%T @ 100%T | ± 0.002 A @ 0.5 A, ± 0.004 A @ 1.0 A, ± 0.3%T @ 100%T | ± 0.002 A @ 0.5 A, ± 0.004 A @ 1.0 A, ± 0.3%T @ 100%T |
| Photometric Repeatability | ≤0.0015 A @ 0.5 A, ≤0.003 A @ 1.0 A, ≤0.25%T @ 100%T | ≤0.0015 A @ 0.5 A, ≤0.003 A @ 1.0 A, ≤0.25%T @ 100%T | ≤0.001 A @ 0.5 A, ≤0.002 A @ 1.0 A, ≤0.15%T @ 100%T | ≤0.001 A @ 0.5 A, ≤0.002 A @ 1.0 A, ≤0.15%T @ 100%T |
| Stability | ≤0.002 A/h @ 500 nm (after preheat 2 hours) | ≤0.002 A/h @ 500 nm (after preheat 2 hours) | ≤0.002 A/h @ 500 nm (after preheat 2 hours) | ≤0.002 A/h @ 500 nm (after preheat 2 hours) |
| Stray Light | ≤0.2%T @ 360nm | ≤0.2%T @ 360nm | ≤0.05%T @ 360nm | ≤0.05%T @ 220 & 360nm |
| Sample Compartment | 4–position, 10mm pathlength cuvette | 4–position, 10mm pathlength cuvette | 4–position, 10mm pathlength cuvette | 4–position, 10mm pathlength cuvette |
| Display | LCD | LCD | LCD | LCD |
| Output | USB Port & Parallel Port (Printer) | USB Port & Parallel Port (Printer) | USB Port & Parallel Port(Printer) | USB Port & Parallel Port (Printer) |
| Power Requirements | 110/220VAC, 50/60Hz, 80W | 110/220VAC, 50/60Hz, 120W | 110/220VAC, 50/60Hz, 80W | 110/220VAC, 50/60Hz, 120W |
| Dimension(L × W × H) | 490 × 360 × 210mm | 490 × 360 × 210mm | 490 × 360 × 210mm | 490 × 360 × 210mm |
| Weight | 12kg | 14kg | 12kg | 14kg |

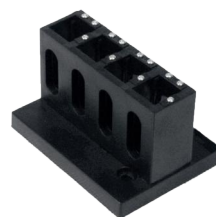


Cat. No. 18900337

Micro Cell holder



Cat. No. 18900340

8-position auto cell changer
(for SP-V1100&SP-UV1100)

Cat. No. 18900331

4-cell holder for 10mm sq. cuvette



Cat. No. 18900332

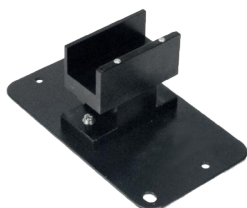
4-cell holder for 10mm
to 50mm sq. cuvette

Cat. No. 18900333

4-cell holder for up to
100mm sq. cuvette

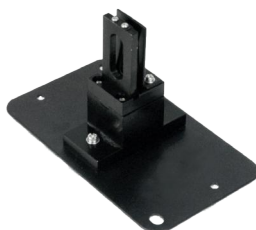
Cat. No. 18900338

Test tube holder(ø8-ø22mm)

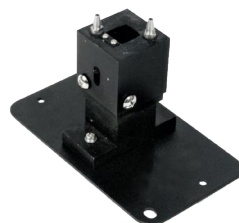


Cat. No. 18900334

cylindrical cell holder(ø16mm)



Cat. No. 18900339

solid sample holder
(ø1.5-3mmø1 position)

Cat. No. 18900335

10mm water-jacketed 1 cell holder
(for SP-V1100 & SP-UV1100)

Cat. No. 18900336

10mm water-jacketed 4-cell holder
(for SP-V1100 & SP-UV1100)Square cuvettes glass/quartz
1-5mm/10-100mm

Cat. No. 18900341

12V20W halogen lamp



Cat. No. 18900342

Milas deuterium lamp,
10V,300mA, 30W
(for SP-UV1000&SP-UV1100)