



**Thermo Scientific Nunc**  
Cell Culture Imaging Products

Flexibility and consistency

**For any imaging application**

**Thermo**  
SCIENTIFIC

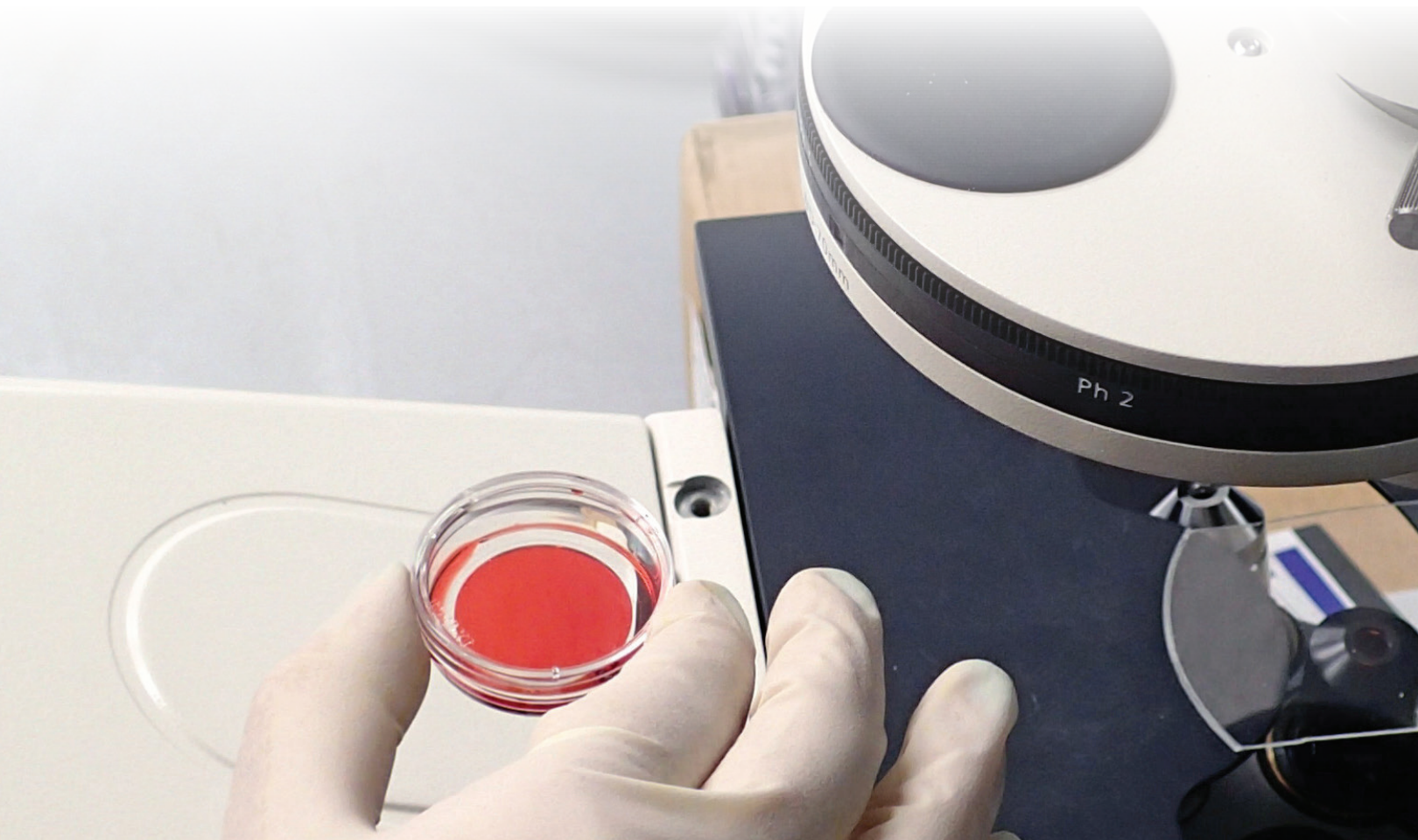


The clear choice

# For high quality imaging

With a variety of formats and surfaces for cell imaging, we offer a comprehensive solution for all of your applications:

- Fluorescence microscopy
- Phase contrast microscopy
- Confocal microscopy
- Live cell imaging
- High content screening and imaging
- Cell-based fluorescence or luminescence assays





#### Fewer slide format-related hassles

- Reduce media evaporation and contamination
- Improve microscopic compatibility
- Eliminate issues related to well size and number

## Glass Bottom Dishes

**Thermo Scientific™ Nunc™ Glass Bottom Dishes\*** give you the flexibility to convert your culture device into an imaging device. This means you keep the same seeding density, media volume and culture conditions.

The Nunc glass bottom dish combines the convenience of a standard 35mm cell culture dish with the imaging benefits of coverglass to provide the optimum optical characteristics required for high-magnification microscopy and confocal image analysis.

Nunc Glass Bottom Dishes are ideal for observation at high magnification:

- Fluorescence microscopy
- Phase contrast microscopy
- Confocal microscopy
- Live cell imaging
- Differential interference contrast microscopy
- Fluorescence *in situ* hybridization (FISH)

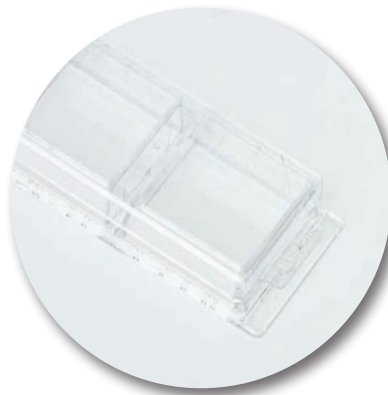
\*Glass bottom dishes are not available in Japan



## Chamber Slides

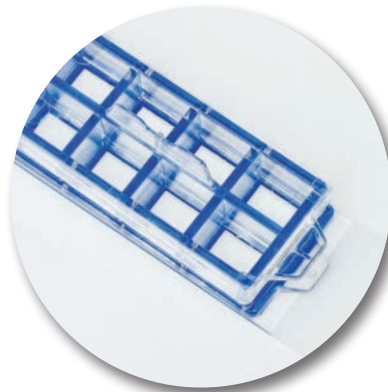
**Thermo Scientific™ Nunc™ Lab-Tek™ Chamber Slides** feature removable chambers that allow you to seed, incubate, fix and stain on a single microscope slide.

- **Lab-Tek Glass Chamber Slides:** Optimal optical clarity with minimal fluorescent background
- **Thermo Scientific™ Nunc™ Lab-Tek™ Permanox™ Chamber Slides:** ThermoScientific™ Nunclon™ Delta treated surface allows attachment of adherent cells and a consistent surface for growth from chamber slide to cell factory
- **Lab-Tek II RS Glass Chamber Slides:** Soda lime glass with special cell culture treatment wash, aids in the attachment of cells to slide
- **Lab-Tek II CC<sup>2</sup> Glass Chamber Slides:** Chemically modified glass provides a growth surface with a positive charge that mimics Poly-D-Lysine and aids in the attachment of fastidious cells



### Lab-Tek I

The silicone gasket between the chamber and the slide acts as a physical barrier after the chamber is removed.



### Lab-Tek II

Biocompatible adhesive acts as a barrier between chamber and slide while the chamber is still attached. After removal of the chamber, the slide has a hydrophobic border to isolate individual wells.

## Cover Glass

**Thermo Scientific Nunc Lab-Tek Chamber Cover Glass** features chambers mounted to coverglass to provide optimal optical characteristics required for high magnification microscopy and confocal image analysis.

- **Lab-Tek Cover Glass:** 1.0 Borosilicate glass
- **Lab-Tek II Cover Glass:** 1.5 Borosilicate glass

## Flasks on Slides

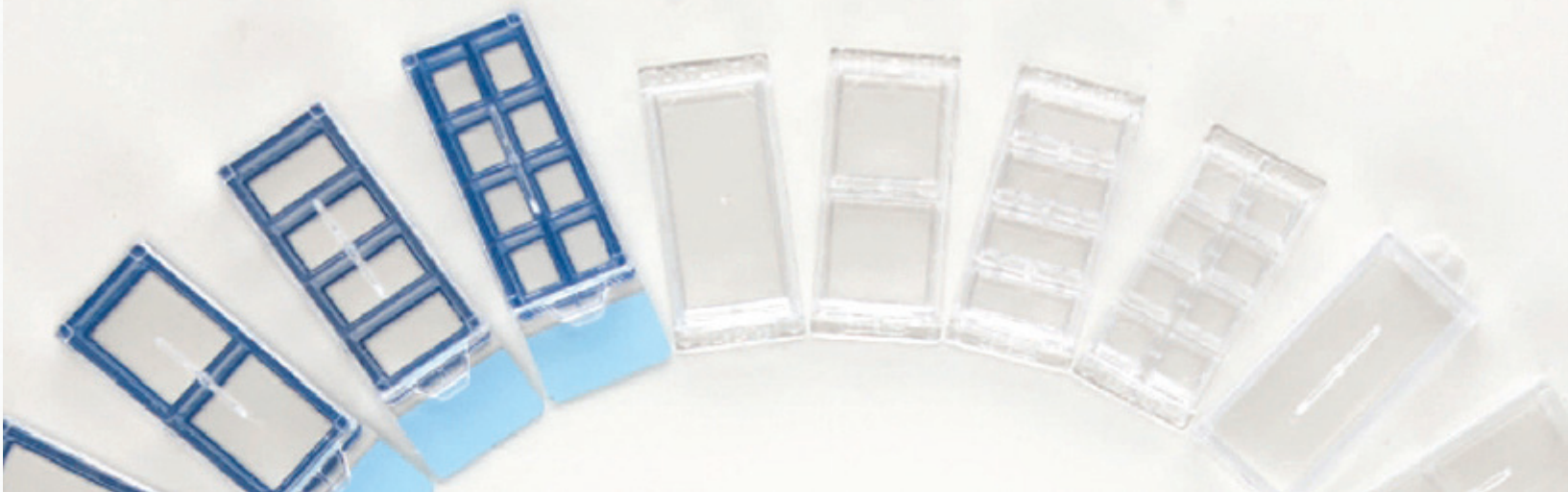
**Thermo Scientific Nunc Flasks on Slides** are an ideal solution for cell karyotyping using single cell autoradiography or single cell immunofluorescence.

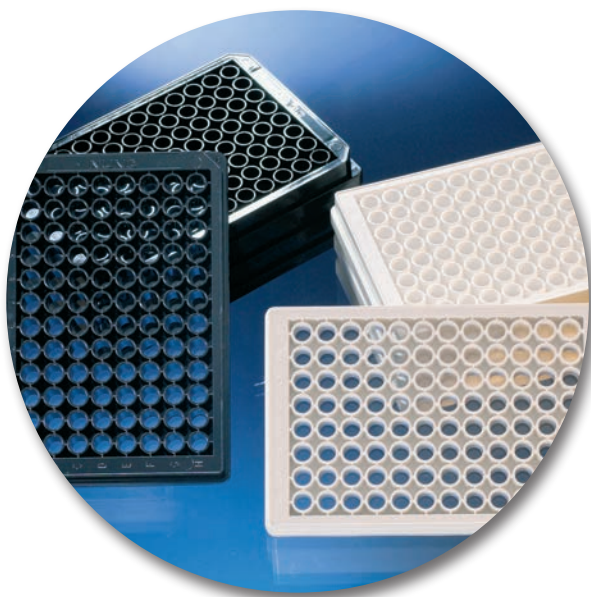
- **Thermo Scientific™ Flaskette™:** Glass slide with removable silicone barrier
- **Thermo Scientific™ SlideFlask™:** Ultrasonically welded flask and polystyrene slide can be broken apart in order to remove the flask from the slide



### SlideFlask

Culture cells directly on the slide and remove flask if desired.



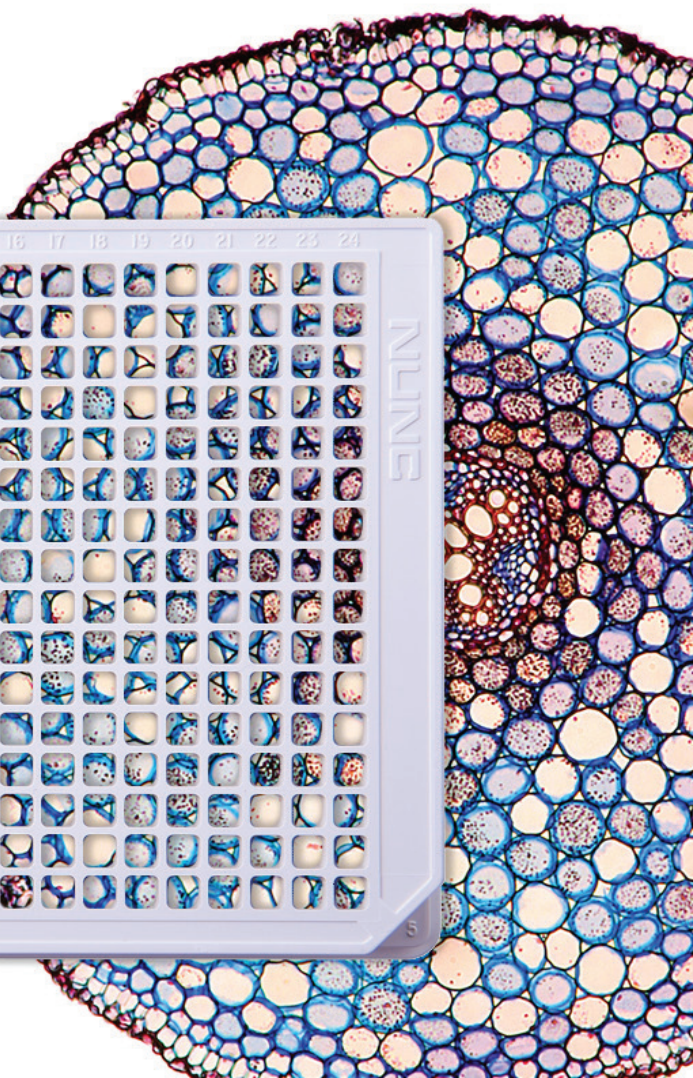
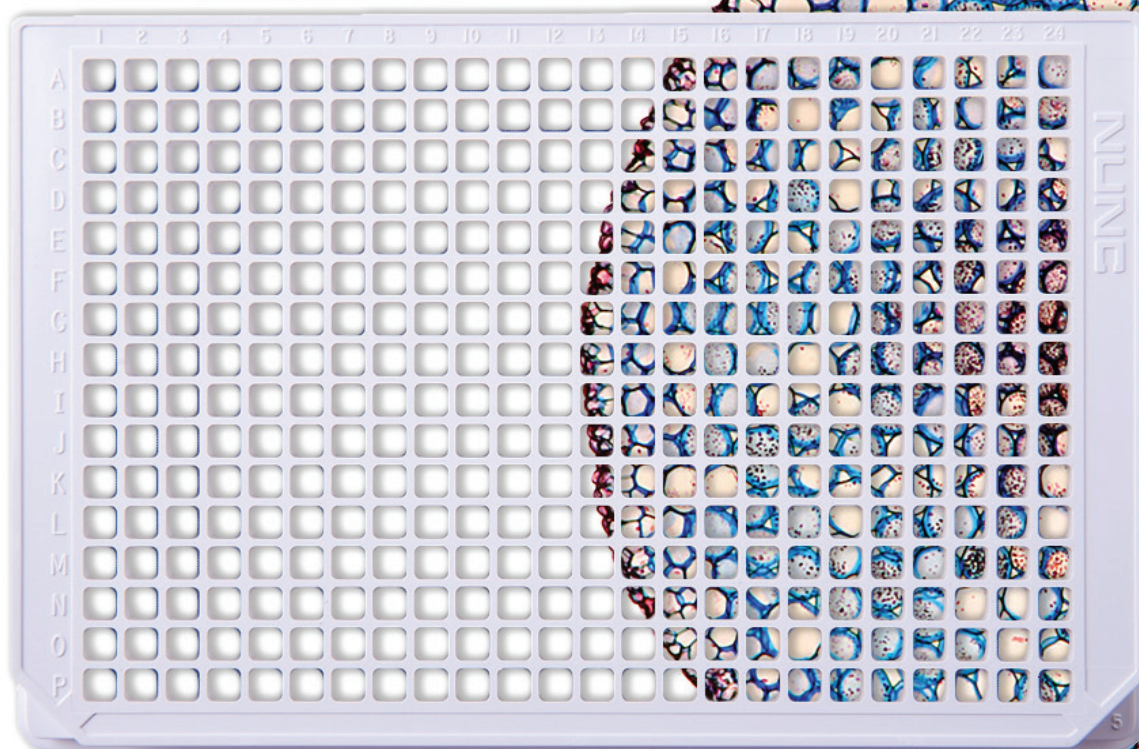


## Optical Bottom Microplates

**Thermo Scientific Nunc 96- and 384-well Optical Bottom Plates** are ideal for microscopic applications. Black microplates are recommended for fluorescence measurements, with minimum back-scattered light and background fluorescence. White plates are best for luminescence measurements, with maximum reflection and minimal autoluminescence.

Nunc Optical Bottom Plates are available with several treatment options:

- **Poly-D-Lysine and Collagen coated** are ideal for cells characterized by low adherence or growth, creating a positive charge on the surface that ensures cell attachment, growth and differentiation
- **Nuncion Delta cell culture treated** surface is a hydrophilic surface that promotes cell attachment and growth
- **Untreated Polystyrene** is hydrophobic and ideal for growth of suspension cultures that can proliferate and grow without attachment, or if you prefer to coat the plates yourself



## Ordering Information

GLASS BOTTOM DISHES			
Catalog Number	Description	Qty/Pack	Qty/Case
150680*	Nunc Glass Based Dish, 12mm	1	20
150682*	Nunc Glass Based Dish, 27mm	1	20
* Glass bottom dishes are not available in Japan			

LAB-TEK GLASS CHAMBER SLIDES				
Catalog Number	No. of Wells	Suggested Working Vol., mL	Culture Area, cm²/well	Units per pk/ carton/cs
177372	1	2.5-4.5	9.4	8/16/96
177380	2	1.2-2.0	4.2	8/16/96
177399	4	0.5-0.9	1.8	8/16/96
177402	8	0.2-0.4	0.8	8/16/96
178599	16	0.2-0.4	0.4	8/16/96
ACCESSORY FOR CAT. NO. 178599				
Catalog Number	Description	Dimensions, mm	Units per case	
171080	Coverglass	22 x 47	55	
LAB-TEK PERMANOX CHAMBER SLIDES				
Catalog Number	No. of Wells	Suggested Working Vol., mL	Culture Area, cm²/well	Units per pk/ carton/cs
177410	1	2.5-4.5	9.4	8/16/96
177429	2	1.2-2.0	4.2	8/16/96
177437	4	0.5-0.9	1.8	8/16/96
177445	8	0.2-0.4	0.8	8/16/96
LAB-TEK II RS GLASS CHAMBER SLIDES				
154453	1	2.0-4.5	8.6	8/16/96
154461	2	1.0-2.0	4.0	8/16/96
154526	4	0.5-1.0	1.7	8/16/96
154534	8	0.2-0.5	0.7	8/16/96
LAB-TEK II CC² GLASS CHAMBER SLIDES				
154739	1	2.0-4.5	8.6	8/16/96
154852	2	1.0-2.0	4.0	8/16/96
154917	4	0.5-1.0	1.7	8/16/96
154941	8	0.2-0.5	0.7	8/16/96
LAB-TEK CHAMBERED COVERGLASS - 1.0 BOROSILICATE GLASS				
155361	1	2.5-4.5	8.6	8/16/96
155380	2	1.2-2.0	4.0	8/16/96
155383	4	0.5-0.9	1.7	8/16/96
155411	8	0.2-0.4	0.7	8/16/96
LAB-TEK CHAMBERED COVERGLASS - 1.5 BOROSILICATE GLASS				
155360	1	2.5-4.5	8.6	8/16/96
155379	2	1.2-2.0	4.0	8/16/96
155382	4	0.5-0.9	1.7	8/16/96
155409	8	0.2-0.4	0.7	8/16/96

FLASKETTE AND SLIDEFLASK					
Catalog Number	Description	Slide Material	Suggested Working Vol., mL	Culture Area, cm <sup>2</sup> /well	Units per pk/carton/cs
<b>177453*</b>	Flaskette	Glass	2.5-5.0	10	8/16/96
<b>170920**</b>	SlideFlask	Polystyrene	2.5-5.0	9	5/50
<i>*CE marked **Nunclon™ Certified</i>					
ACCESSORY FOR CAT. NO. 170920					
Catalog Number	Description	Dimensions, mm	Units per pk/cs		
<b>171862</b>	Coverglass	18 x 50	100/1000		

NUNC MICROWELL 96-WELL OPTICAL-BOTTOM PLATES WITH POLYMER BASE									
Catalog Number	Surface	Well Design	Color	Bottom Plate	Total Vol., µL	Sterile	Lid	Qty/Pack	Qty/Case
<b>152028*</b>	Poly-D-Lysine	96 F	White	Polymer	400	--*	Yes	5	20
<b>152036*</b>	Collagen I	96 F	Black	Polymer	400	--*	Yes	5	20
<b>152037*</b>	Poly-D-Lysine	96 F	Black	Polymer	400	--*	Yes	5	20
<b>152040*</b>	Collagen I	96 F	White	Polymer	400	--*	Yes	5	20
<b>165305**</b>	Cell Culture	96 F	Black	Polymer	400	Yes	Yes	10	30
<b>165306**</b>	Cell Culture	96 F	White	Polymer	400	Yes	Yes	10	30
<b>265301</b>	Non-treated	96 F	Black	Polymer	400	No	No	10	30
<b>265302</b>	Non-treated	96 F	White	Polymer	400	No	No	10	30
<i>* Produced in a clean environment ** Certified</i>									
NUNC MICROWELL 384-WELL OPTICAL-BOTTOM PLATES WITH POLYMER BASE									
<b>142761**</b>	Cell Culture	384 F	Black	Polymer	120	Yes	Yes	10	30
<b>142762**</b>	Cell Culture	384 F	White	Polymer	120	Yes	Yes	10	30
<b>152029</b>	Poly-D-Lysine	384 F	Black	Polymer	120	--*	Yes	5	20
<b>152041</b>	Collagen I	384 F	Black	Polymer	120	--*	Yes	5	20
<b>164730**</b>	Cell Culture	384 F	Black	Polymer	120	Yes	No	10	30
<b>242763</b>	Non-Treated	384 F	White	Polymer	120	No	No	10	30
<b>242764</b>	Non-Treated	384 F	Black	Polymer	120	No	No	10	30
<i>* Produced in a clean environment ** Certified</i>									
NUNC MICROWELL 96-WELL OPTICAL-BOTTOM PLATES WITH COVERGLASS BASE									
<b>160376</b>	CC <sup>2</sup>	96 F	Black	1.5 Coverglass	400	Yes	Yes	6	30
<b>164588</b>	Cell Culture	96 F	Black	1.5 Coverglass	400	Yes	Yes	6	30
<b>164590</b>	Cell Culture	96 F	White	1.5 Coverglass	400	Yes	Yes	6	30
<b>265300</b>	Non-treated	96 F	Black	1.5 Coverglass	400	No	No	5	30
NUNC MICROWELL 384-WELL OPTICAL-BOTTOM PLATES WITH COVERGLASS BASE									
<b>164586</b>	Cell Culture	384 F	Black	1.5 Coverglass	120	Yes	Yes	10	30
<b>240074</b>	Non-Treated	384 F	Black	1.5 Coverglass	120	No	No	10	30

**thermoscientific.com**

© 2013 Thermo Fisher Scientific Inc. All rights reserved. All trademarks are the property of Thermo Fisher Scientific Inc. and its subsidiaries. Specifications, terms and pricing are subject to change. Not all products are available in all countries. Please consult your local sales representative for details.

**Africa-Other** +27 11 570 1840  
**Australia** +61 2 8844 9500  
**Austria** +43 1 333 50 34 0  
**Belgium** +32 53 73 42 41  
**Canada** +1 800 530 8447  
**China** +86 10 8419 3588  
**Denmark** +45 70 23 62 60  
**Europe-Other** +43 1 333 50 34 0

**Finland/Norway/Sweden**  
+46 8 556 468 00  
**France** +33 1 60 92 48 00  
**Germany** +49 6103 408 1014  
**India** +91 22 6742 9434  
**Italy** +39 02 950 591  
**Japan** +81 45 453 9100  
**Latin America** +1 608 276 5659

**Middle East** +43 1 333 50 34 0  
**Netherlands** +31 76 579 55 55  
**South Africa** +27 11 570 1840  
**Spain** +34 914 845 965  
**Switzerland** +41 61 716 77 00  
**UK** +44 1442 233555  
**USA** +1 800 532 4752

**Thermo**  
S C I E N T I F I C  
Part of Thermo Fisher Scientific